



# STRIPESORB® ABSORBENT PANEL



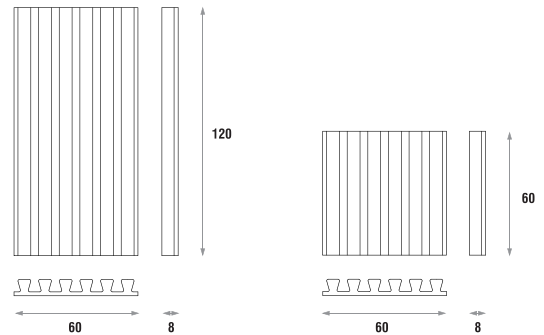
Image of 60x60cm model Ref.:STS060 (on the left) and Ref.:STS120 applied (ambient image).

## DESCRIPTION

The STRIPESORB® is the panel meant for budget-conscious acoustic projects. The STRIPESORB® acoustic foam panels are cut in a simple standard method to keep them more affordable. It is a great solution to treat acoustics in small sound studios, home listening rooms and small vocal or instrument booths, by solving small flutter echo problems.

Its shape maximises the area that is exposed to the sound waves for better absorption. You can combine the STRIPESORB® with the STRIPEFUSER® diffusion panel. They have the same shape and offer great decorative alternatives.

## TECHNICAL DRAWINGS



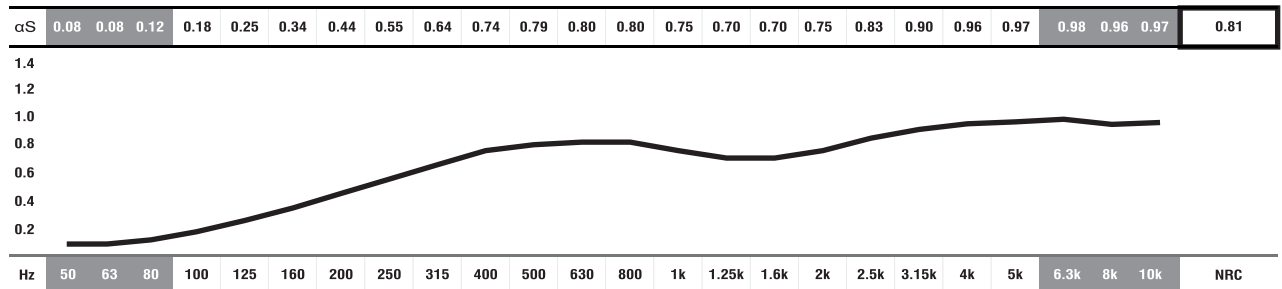
## FEATURES

- NRC: **0.81/m²** [ $>250\text{Hz}; <10\text{KHz}$ ].
- Raw material: melamine resin or standard acoustic foam.
- **MELAMIN RESIN** - Flame resistance: Germany B1, France M1, GB class1, USA V0/HF1.
- **ACOUSTIC FOAM** - Self-extinguishable M1 fire-retardant foam.
- Very easy to install.
- Package: 4 or 12 units; 4 or 8 units.

## MODELS AND SIZES

MODELS	HEIGHT	WIDTH	DEPTH	WEIGHT
STS120	120cm	60 cm	8 cm	0.8 Kg
STS060	60 cm	60 cm	8 cm	0.4 Kg

## ABSORPTION COEFFICIENT



■ ABSORPTION COEFFICIENT: Values in accordance with the standards: EN 20654, ASTM C423 and EN 11654.

■ Values [ $<100\text{Hz}$  and  $>5\text{K}$ ] are Non Standard Values.

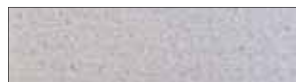
## REGULAR AND MELAMINE FOAM COLOURS



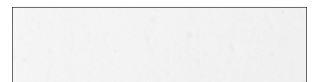
**CREAM**  
Regular Foam  
FR 25



**GREY**  
Regular Foam  
FR 25



**LIGHT GREY**  
Melamine Foam  
BTEC G



**WHITE**  
Melamine Foam  
BTEC G

## IMPORTANT NOTICES

- JOCAVI® accepts no responsibility for any printing errors. Specifications can be modified without prior notice, if technical or commercial reasons so require.
- The colours shown on this catalogue are only a reference and an illustration of the products finishing. The colours shown are not binding because brightness, contrast and colour balance may vary due to the printing process.
- Colours may vary due to raw-material suppliers' changes and some differences may occur in tonal range.
- Typical Indoor Comfort Standards state a temperature range of 20°C - 27°C (68°F - 81°F), and a relative humidity of less than 60%. These would be considered as normal operational levels of JOCAVI® products' range.
- Despite all the standard sizes of all products, this model can be customised upon previous consultation. Sizes may vary slightly due to their production method and some inherent raw-materials characteristics.