



# SQUARYDIFFUSOR® TILE

DIFFUSION PANEL



Image of 15x15cm model Ref.:SQAT15 (on the left) and 15x15cm models applied (ambient image).

NEW TILE MODEL

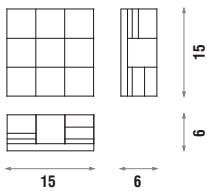
## DESCRIPTION

The SQUARYDIFFUSOR®Tile is a diffusion panel that has a higher balance between diffusion/absorption. It is a 2D quadratic diffuser with five slightly uneven gradients. The SQUARYDIFFUSOR®Tile is made of low density clay paste. Due to its quadratic shape and the raw material it uses, its diffusion and absorption features are well balanced for a diffusion panel. The SQUARYDIFFUSOR®Tile enables quite good control of acoustics by fragmenting the reflected energy, while the absorption factor is not too high. This product is therefore recommended for big or small diffusion surfaces with continuous coating, by making the acoustics of those spaces quite homogeneous. It is applied with adhesive glue for ceramic. It's an ideal product to the construction market.

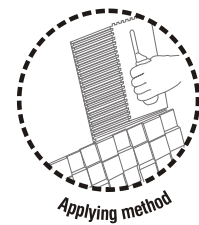
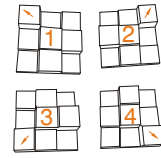
## FEATURES

- Manufactured with ceramic.
- Average diffusion: 0.57/m² [ $>100\text{Hz}$ ;  $<5\text{KHz}$ ].
- Fire-resistance: M0.
- 100% recyclable.
- Package: 10 units.
- Installation: adhesive glue for ceramics.

## TECHNICAL DRAWINGS



## ASSEMBLY SCHEME



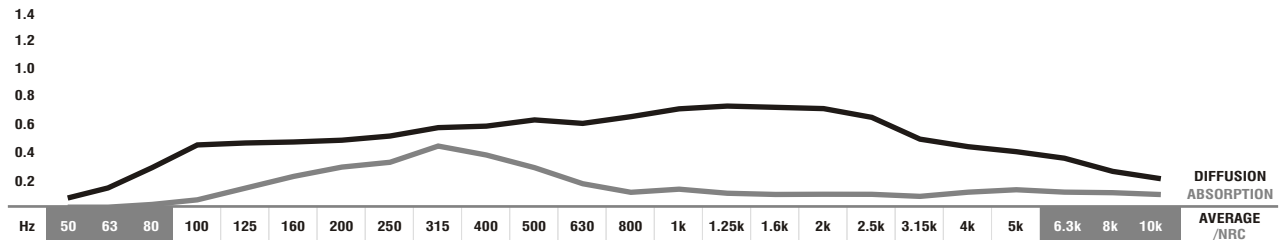
1	2	3	4
2	3	4	1
3	4	1	2
4	1	2	3

## MODELS AND SIZES

MODELS	HEIGHT	WIDTH	DEPTH	WEIGHT
SQAT15	15 cm	15 cm	6 cm	0.8 Kg

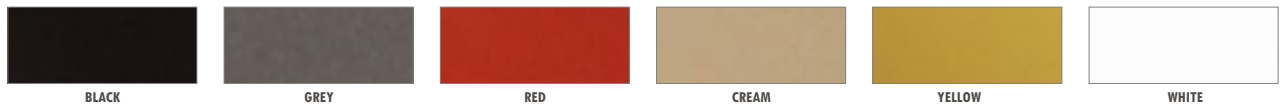
## DIFFUSION - ABSORPTION COEFFICIENT

	0.05	0.16	0.31	0.45	0.46	0.48	0.49	0.53	0.56	0.59	0.61	0.60	0.64	0.69	0.73	0.71	0.70	0.66	0.51	0.44	0.40	0.36	0.28	0.21	0.57
$\alpha_S$	0.00	0.00	0.01	0.06	0.15	0.23	0.31	0.37	0.44	0.38	0.30	0.19	0.13	0.14	0.09	0.08	0.08	0.08	0.07	0.10	0.14	0.11	0.09	0.08	0.22



■ ABSORPTION COEFFICIENT: Values in accordance with the standards: EN 20654, ASTM C423 and EN 11654. ■ Values [ $<100\text{Hz}$  and  $>5\text{K}$ ] are Non Standard Values.  
 ■ DIFFUSION COEFFICIENT: These values were obtained by mathematical calculations and tests carried out in our laboratory.

## STANDARD CERAMIC COLOURS



## IMPORTANT NOTICES

- JOCAVI® accepts no responsibility for any printing errors. Specifications can be modified without prior notice, if technical or commercial reasons so require.
- RAL® is an international independent colour standard system partner for industry, trade, architecture and design. Should be consulted before placing any order.
- The colours shown on this catalogue are only a reference and an illustration of the products finishing. The colours shown are not binding because brightness, contrast and colour balance may vary due to the printing process.
- Colours may vary due to raw-material suppliers' changes and some differences may occur in tonal range.
- Sizes may vary slightly due to their production method and some inherent raw-materials characteristics.

