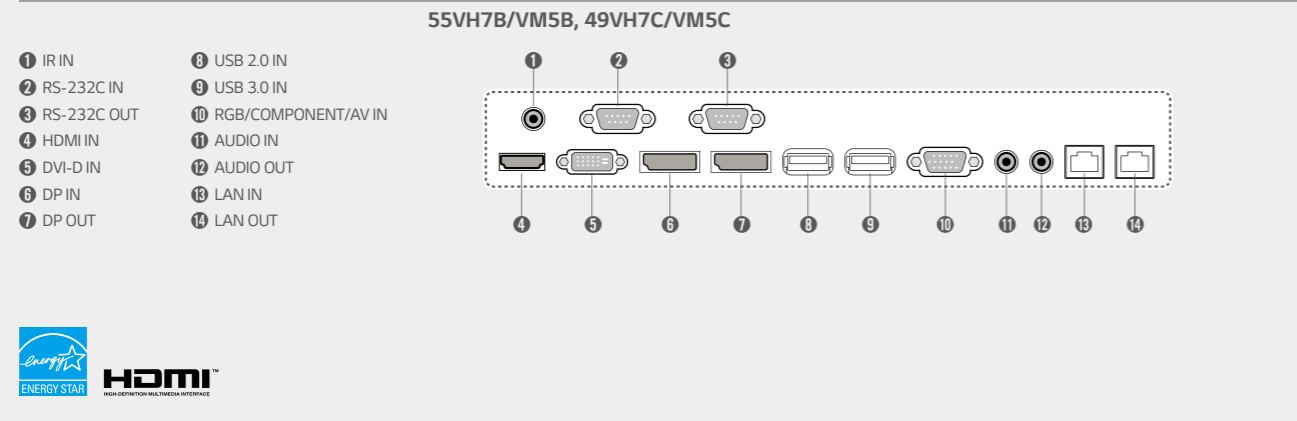


## Specifications

	55VH7B	55VM5B	49VH7C	49VM5C
Screen Size	55"	55"	49"	49"
Panel Technology	IPS			
Aspect Ratio	16 : 9			
Native Resolution	1,920 x 1,080 (FHD)			
Brightness	700 cd/m <sup>2</sup>	500 cd/m <sup>2</sup>	700 cd/m <sup>2</sup>	500 cd/m <sup>2</sup>
Contrast Ratio	1,400:1	1,400:1	1,300:1	1,300:1
Dynamic CR	500,000:1			
Viewing Angle (H x V)	178 x 178			
Response Time	8ms (G to G)			
PANEL				
Surface Treatment	55VH7B-B : Hard coating(2 H), Anti-reflection treatment of the front polarizer (Reflectance <2%) 55VH7B-H : Hard coating(3 H), Anti-glare treatment of the front polarizer (Haze 44%)	Hard coating(2 H), Anti-glare treatment of the front polarizer (Haze 10%)	Hard coating (2 H), Anti-glare low reflection treatment of the front polarizer (Haze 3% (Typ))	Hard coating (3 H), Anti-glare treatment of the front polarizer (Haze 10%)
Guaranteed Operating Hour	24 Hours			
Orientation	Portrait & Landscape			
CONNECTIVITY				
Input	HDMI, DP, DVI-D, OPS, Audio, USB 2.0, USB 3.0, RGB			
Output	DP, Audio			
External Control	RS232C, RJ45, IR Receiver			
Bezel Color	-			
Bezel Width	0.9 mm (Top/Bottom/Left/Right even bezel) / 1.8 mm *B to B : Panel Bezel + Panel Bezel			
PHYSICAL SPECIFICATION				
Monitor Dimension (W x H x D)	1,211.4 x 682.2 x 86.5 mm	1,211.4 x 682.2 x 86.5 mm	1,075.6 x 605.8 x 86.2 mm	1,075.6 x 605.8 x 86.2 mm
Weight (Head)	18.6 kg	18.6 kg	17.5 kg	17.5 kg
Carton Dimensions (W x H x D)	1,353 x 855 x 263 mm	1,353 x 855 x 263 mm	1,214 x 775 x 263 mm	1,214 x 775 x 263 mm
Packed Weight	25.3 kg	25.3 kg	23.2 kg	23.2 kg
VESA™ Standard Mount Interface	600 x 400 mm			
SPECIAL FEATURES	Temperature Sensor, Tile Mode (up to 15 x 15), Natural Mode@Tile Mode, Energy Saving, Smart Energy Saving, File Play with USB, Internal Memory (8 GB, System 4 GB + Available 4 GB), Wi-Fi Dongle Ready, USB Cloning, Content Scheduling, Fail over (USB, RGB, DVI, HDMI, Internal Memory)			
ENVIRONMENTAL CONDITIONS				
Operating Temperature Range	0 °C to 40 °C			
Operating Humidity Range	10 % to 80 %			
POWER				
Power Supply	100-240V~, 50/60Hz			
Power Type	Built-In Power			
POWER CONSUMPTION				
Typ.	220 W	150 W	TBD	120 W
Smart Energy Saving	110 W	80 W	TBD	70 W
STANDARD (CERTIFICATION)				
Safety	UL / cUL / CB / TUV / KC			
EMC	FCC Class "A" / CE / KCC			
ErP / Energy Star	NA / Yes (Energy Star 7.0)			
MEDIA PLAYER COMPATIBILITY				
OPS Type Compatible	Yes			
External Media Player Attachable	Yes (MP500/MP700)			
SOFTWARE COMPATIBILITY				
SuperSign W/Lite	Yes			
SuperSign C	Yes			
ACCESSORIES				
Basic	Remote controller, Power cable, DP cable, Manual, IR receiver, RS-232C cable, LAN cable, Guide bracket, Screws			
Optional	Wall mount (Landscape: WM-L640V, Portrait: WM-P640V), OPS kit (KT-OPSA), HDBaseT (EB-B100)			

## Connectivity



Download LG Commercial Display Mobile App

Learn more [www.lg.com/b2b](http://www.lg.com/b2b) or [www.lgcommercial.com](http://www.lgcommercial.com)

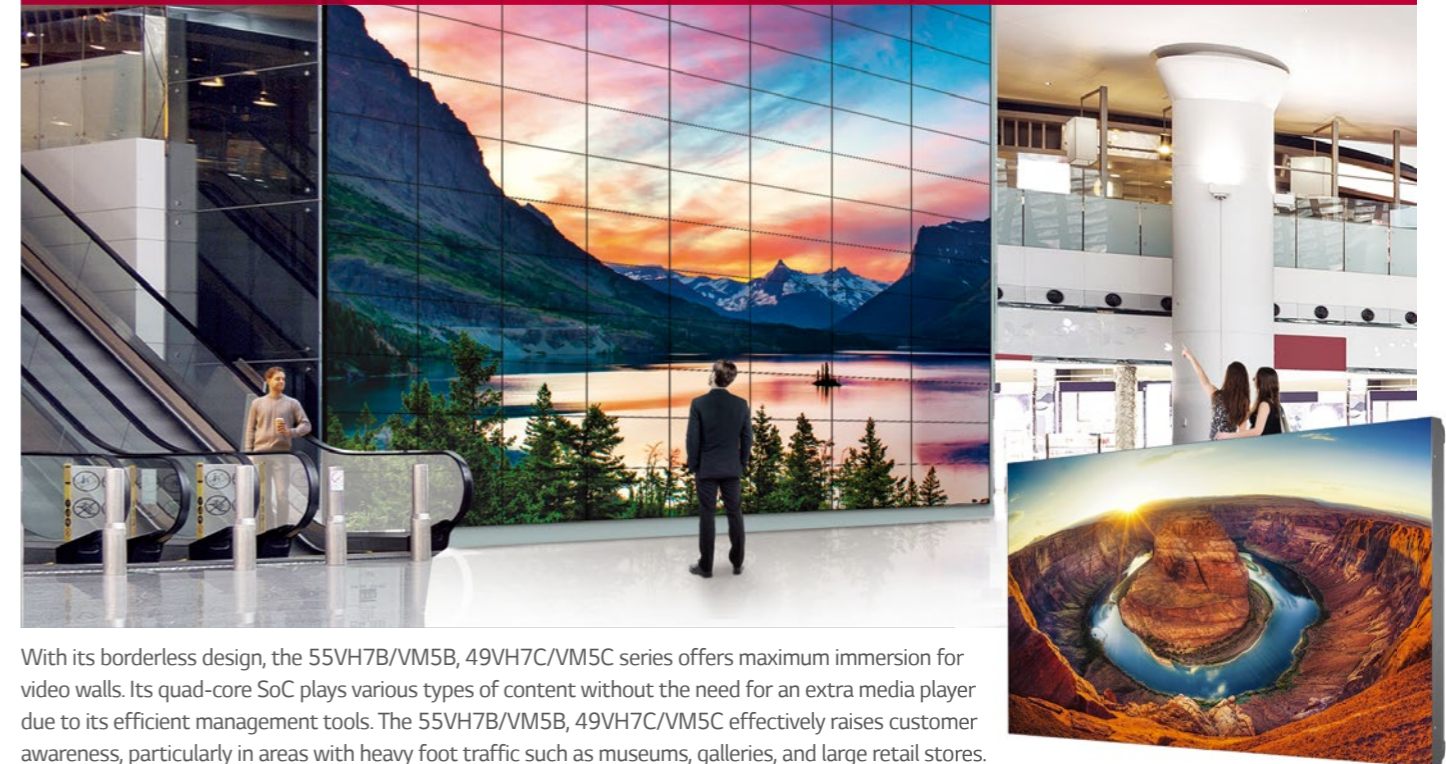
YouTube [youtube.com/c/LGCommercialDisplay](https://www.youtube.com/c/LGCommercialDisplay)

LG may make changes to specifications and product descriptions without notice.  
Copyright © 2016 LG Electronics Inc. All rights reserved. "LG Life's Good" is a registered trademark of LG Corp.  
The names of products and brands mentioned here may be the trademarks of their respective owners.



## Artistic Immersion, Overwhelming Attractiveness

### World Best Class Video Wall 55VH7B/VM5B, 49VH7C/VM5C



With its borderless design, the 55VH7B/VM5B, 49VH7C/VM5C series offers maximum immersion for video walls. Its quad-core SoC plays various types of content without the need for an extra media player due to its efficient management tools. The 55VH7B/VM5B, 49VH7C/VM5C effectively raises customer awareness, particularly in areas with heavy foot traffic such as museums, galleries, and large retail stores.

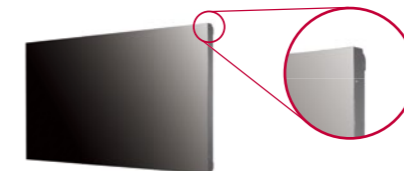
## Key Features

### Borderless Design



### Narrow Bezel

Borderless design with its 0.9 mm even panel bezel\* and 1.8 mm BtB (Bezel to Bezel)\*\* size, verified by Nemko\*\*\*, enables immersive and seamless viewing experiences on assembled video wall screens.



\*Panel Bezel: The black matrix section where an image is not displayed on the front panel.  
\*\*BtB (Bezel to Bezel): Panel Bezel + Panel Bezel (Borderless type, no metal bezel)  
\*\*\*Nemko (Nogerois Elektriske Materielkontroll) was established in 1933 as an institution for mandatory safety testing and national approval of electrical equipment to be marketed and sold in Norway. Since it was transformed into independent, self-owned foundation in 1991, it has provided worldwide testing and certification.

### Smart Platform



### Built-in SoC\* and Synced Playback

The optimized built-in quad-core SoC in the 55VH7B/VM5B, 49VH7C/VM5C can play various content formats and eliminates the need for an external media player. Using its built-in SoC, each display plays its video tile without lag for synchronized content playback.



\*System-on-Chip

- CPU**  
1.2 GHz Quad Core CPU
- Memory**  
2.5 GB double data 3 (DDR3) 32 bit memory
- GPU**  
550MHz video processor with full codec (WMV, MP4, HEVC, VP9, and H.264 capabilities)
- Internal Memory**  
A storage of 8 GB (4 GB is occupied by system)

### webOS

The webOS platform provides easy and convenient tools to create contents. LG's SDK\* and technical supports make content development and management easier.



<http://developer.lge.com/webOSSignage>

\*Software Development Kit





# Artistic Immersion, Overwhelming Attractiveness

## World Best Class Video Wall 55VH7B/VM5B, 49VH7C/VM5C



Screen Size  
49", 55"



### 55VH7B/VM5B, 49VH7C/VM5C

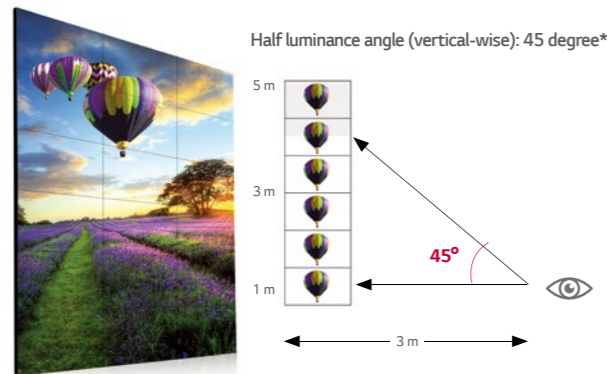
- Brightness: 55VH7B/49VH7C: 700 cd/m<sup>2</sup>, 55VM5B/49VM5C: 500 cd/m<sup>2</sup>
- Surface Treatment:
  - 55VH7B-B: Hard coating(2 H), Anti-reflection treatment of the front polarizer (Reflectance < 2 %)
  - 55VH7B-H: Hard coating(3 H), Anti-glare treatment of the front polarizer (Haze 44 %)
  - 55VM5B: Hard coating(2 H), Anti-glare treatment of the front polarizer (Haze 10 %)
  - 49VH7C: Hard coating(2 H), Anti-glare low reflection treatment of the front polarizer (Haze 3 % (Typ))
  - 49VM5C: Hard coating(3 H), Anti-glare treatment of the front polarizer (Haze 10 %)
- Bezel: 0.9 mm (T/B/L/R even bezel)
- Depth:
  - 55VH7B/VM5B: 86.5 mm
  - 49VH7C/VM5C: 86.2 mm
- Interface: HDMI / DVI / RGB / IR, Daisy-chain (DP, RS232C, RJ45)

## Key Features

### Superior Picture Quality

#### Clear Viewing Angle

The 55VH7B/VM5B, 49VH7C/VM5C ensures clear picture quality even when installed in stacks of more than four. This is very favorable for the quantity of video walls installed in large spaces.



\*The angle from the center of the screen to have 50 % of the initial luminance.

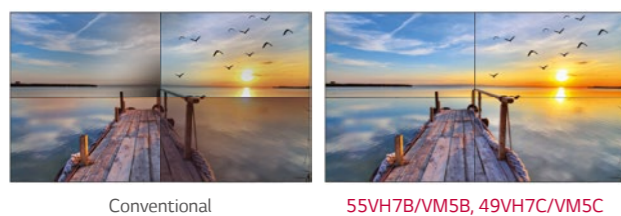
#### Uniform Brightness

LG's LED backlight technology guarantees high uniformity in brightness to ensure a clear picture. On other screens, certain spots may appear darker than others, but the new 55VH7B/VM5B, 49VH7C/VM5C generates high visibility and a consistent brightness across the whole screen.



### Video Wall Image Creation

Through Video Wall Image Creation (VIC) technology, color and brightness differences are compensated in circuit part with an algorithm to make the panels into a same characteristic so that each video wall maintains the consistent white balance.



### Image Gap Reduction

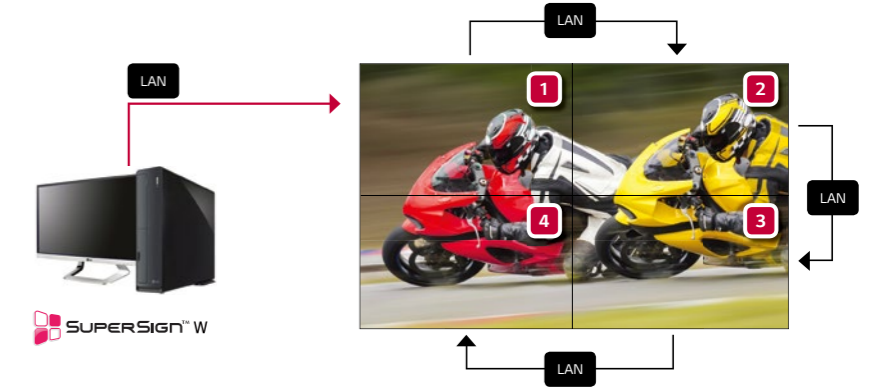
The 55VH7B/VM5B, 49VH7C/VM5C includes an image improvement algorithm that can adjust to objects located in the boundary of bezel for a seamless viewing experience.



## Enhanced Content Management

### LAN Daisy Chain Performance

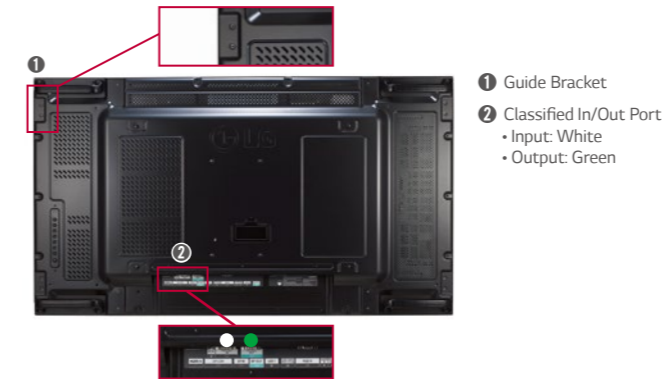
A LAN daisy chain allows you to execute commands to control and monitor the screens and even update their firmware.



## Convenient Options

### Guide Bracket / Classified Port

A guide bracket is an attachment that ensures the video wall remains flat. The classified in/out port prevents errors when connecting a daisy chain.



### Control Buttons

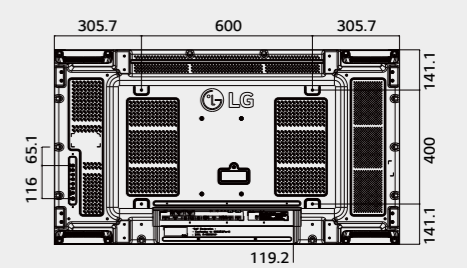
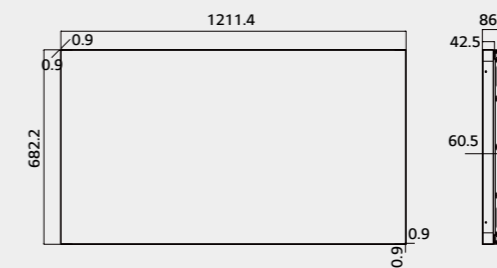
With 8 control buttons, it's easy to operate various functions of the 55VH7B/VM5B, 49VH7C/VM5C, such as controlling the OSD (On Screen Display) and changing the input source.



## Dimension (unit : mm)

### 55"

1,211.4 x 682.2 x 86.5 mm  
18.6 kg



### 49"

1,075.6 x 605.8 x 86.2 mm  
17.5 kg

