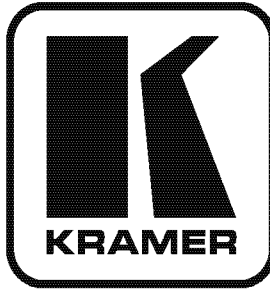


Kramer Electronics, Ltd.



USER MANUAL

Model:

VP-411DS

4x1 Automatic UXGA / Audio Switcher

Contents

1	Introduction	1
2	Getting Started	1
2.1	Quick Start	1
3	Overview	3
4	Your VP-411DS 4x1 Automatic UXGA / Audio Switcher	5
4.1	Using the IR Transmitter	6
5	Connecting the VP-411DS 4x1 Automatic UXGA / Audio Switcher	7
5.1	Connecting the VP-411DS 4x1 Automatic UXGA / Audio Switcher	7
5.2	Setting the PRIORITY DIP-switches	9
5.3	Connecting the REMOTE Terminal Block	10
5.4	Connecting a PC	11
6	Flash Memory Upgrade	12
6.1	Downloading from the Internet	12
6.2	Connecting the PC to the RS-232 Port	12
6.3	Upgrading Firmware	13
7	Technical Specifications	15
8	Table of Hex Codes for Serial Communication	15
9	Kramer Protocol 2000	16

Figures

Figure 1:	VP-411DS 4x1 Automatic UXGA / Audio Switcher	5
Figure 2:	VP-411DS 4x1 Automatic UXGA / Audio Switcher Underside	6
Figure 3:	VP-411DS 4x1 Automatic UXGA / Audio Switcher Connections	8
Figure 4:	VP-411DS DIP-switches	9
Figure 5:	Connecting the Contact Closure Remote Control Pins	10
Figure 6:	Connecting a PC	11
Figure 7:	Flash Magic Screen	13

Tables

Table 1:	VP-411DS 4x1 Automatic UXGA / Audio Switcher Topside Features	5
Table 2:	VP-411DS 4x1 Automatic UXGA / Audio Switcher Underside Features	6
Table 3:	DIP-switch Priority Setup	9
Table 4:	Technical Specifications of the VP-411DS	15
Table 5:	VP-411DS Hex Codes for Switching via RS-232	15
Table 6:	Protocol Definitions	16
Table 7:	Instruction Codes for Protocol 2000	17

1 Introduction

Welcome to Kramer Electronics! Since 1981, Kramer Electronics has been providing a world of unique, creative, and affordable solutions to the vast range of problems that confront the video, audio, presentation, and broadcasting professional on a daily basis. In recent years, we have redesigned and upgraded most of our line, making the best even better! Our 1,000-plus different models now appear in 11 groups¹ that are clearly defined by function.

Congratulations on purchasing your Kramer Tools **VP-411DS** *4x1 Automatic UXGA / Audio Switcher*. This product is ideal for any system requiring automatic computer and presentation UXGA routing.

The package includes the following items:

- **VP-411DS** 4x1 Automatic UXGA / Audio Switcher
- Power adapter (+12V DC input)
- Kramer **RC-IR3** Infrared Remote Control Transmitter (including the required battery and a separate user manual²)
- This user manual²

2 Getting Started

We recommend that you:

- Unpack the equipment carefully and save the original box and packaging materials for possible future shipment
- Review the contents of this user manual
- Use Kramer high performance high resolution cables³

2.1 Quick Start

This quick start chart summarizes the basic setup and operation steps.

1 GROUP 1: Distribution Amplifiers; GROUP 2: Switchers and Matrix Switchers; GROUP 3: Control Systems; GROUP 4: Format/Standards Converters; GROUP 5: Range Extenders and Repeaters; GROUP 6: Specialty AV Products; GROUP 7: Scan Converters and Sealers; GROUP 8: Cables and Connectors; GROUP 9: Room Connectivity; GROUP 10: Accessories and Rack Adapters; GROUP 11: Sierra Products

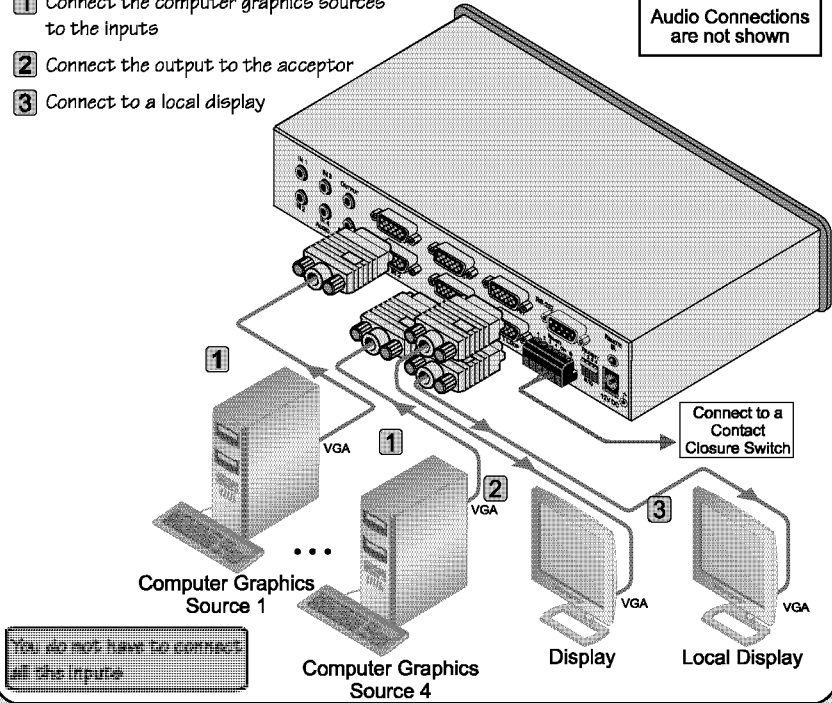
2 Download up-to-date Kramer user manuals from <http://www.kramerelectronics.com>

3 The complete list of Kramer cables is available from <http://www.kramerelectronics.com>

Step 1: Connect the inputs and the outputs - see section 5

- 1 Connect the computer graphics sources to the inputs
- 2 Connect the output to the acceptor
- 3 Connect to a local display

Audio Connections are not shown

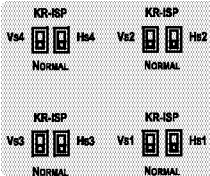


Step 2: Connect the power

Step 3: Set the switches on the underside - see section 5

Set the Hs and Vs underside polarity switches

Set to NORMAL



Step 4: Operate the machine

Operate via the front panel buttons, IR remote control transmitter or external IR receiver cable, RS-232, RS-485 and remote control contact closure

3 Overview

The Kramer **VP-411DS** is a high performance 4x1 automatic switcher for UXGA signals and stereo audio signals. It switches any one of four UXGA sources to the UXGA output 15-pin HD computer graphics video connector, and any one of four stereo audio sources to the stereo audio output on a 3.5mm mini connector. Both the UXGA and audio IN 1 connectors are connected to output loop connectors.

The **VP-411DS** can be configured to operate in the automatic standby switching mode or in the manual mode, via the DIP-switches. When in the automatic mode, the **VP-411DS** will switch to the primary input when it is present. It will switch to the second input in priority upon loss of the primary input¹ and it will switch from the secondary input back to the primary input when the primary signal is reconnected. When in the manual mode, the **VP-411DS** is controlled by the control panel.

In addition, the **VP-411DS**:

- With its video bandwidth exceeding 300MHz, ensures transparent operation at the highest resolutions
- Includes the Kramer innovative integrated sync processing: KR - ISPT™ technology, which lets you achieve a sharp, stable image when the sync level is too low, by restoring the sync signal waveform
- Has PANEL LOCK and OFF buttons
- Automatically switches the stereo audio signal with the video signal (audio-follow-video) when switching the active input to the output
- Includes PRIORITY DIP-switches for selecting the default UXGA master source signal
- Comes with contact closure remote control for forced operation
- Is housed in a desktop-sized enclosure, and is +12V DC fed

The **VP-411DS** can be controlled via the:

- Front panel buttons
- Infrared remote control transmitter or external remote IR receiver extension cable
- RS-232 serial commands transmitted by a touch screen system, PC, or other serial controller
- Remote control contact closure

¹ And down to the input of the lowest priority

To achieve the best performance:

- Connect only good quality connection cables, thus avoiding interference, deterioration in signal quality due to poor matching, and elevated noise levels (often associated with low quality cables)
- Avoid interference from neighboring electrical appliances that may adversely influence signal quality and position your Kramer **VP-411DS** away from moisture, excessive sunlight and dust



Caution – No operator-serviceable parts inside unit.

Warning – Use only the Kramer Electronics input power wall adapter that is provided with this unit¹.

Warning – Disconnect power and unplug unit from wall before installing or removing device or servicing unit.

¹ For example: model number AD2512C, part number 2535-000251

4 Your VP-411DS 4x1 Automatic UXGA / Audio Switcher

Figure 1 and Table 1 define the **VP-411DS**:

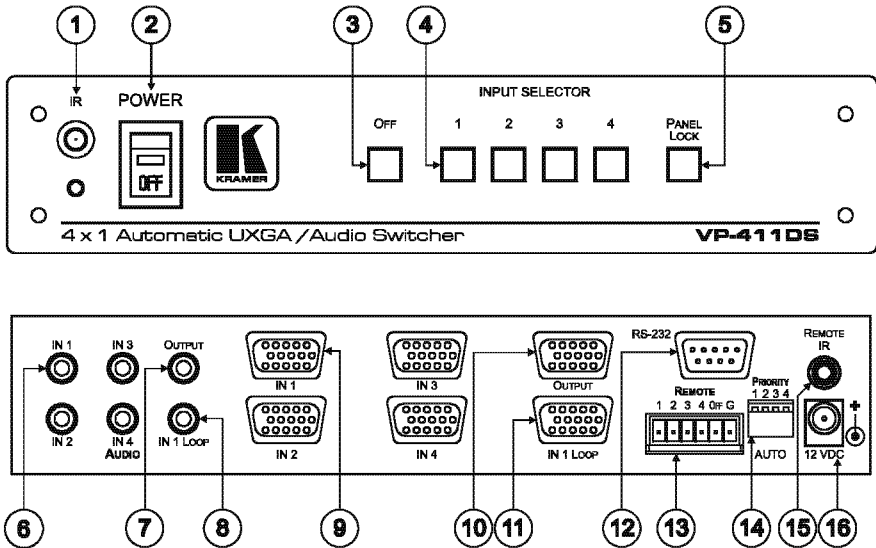


Figure 1: VP-411DS 4x1 Automatic UXGA / Audio Switcher

Table 1: VP-411DS 4x1 Automatic UXGA / Audio Switcher Topside Features

#	Feature	Function
1	IR Receiver	The yellow LED lights when receiving signals from the infrared remote control transmitter
2	POWER Switch	Illuminated switch for turning the unit ON or OFF
3	OFF Button	Press to disconnect the output from the inputs
4	INPUT SELECTOR Buttons	Press to select an input
5	PANEL LOCK Button	Press to toggle disengaging the front panel buttons
6	IN 1 3.5mm Mini Connector	Connect to the unbalanced stereo source (from IN 1 to IN 4)
7	OUTPUT 3.5mm Mini Connector	Connect to an unbalanced stereo audio output
8	IN 1 LOOP 3.5mm Mini Connector	Connect input 1 to an additional audio acceptor
9	IN 1 15-pin HD Connector	Connect to the video source (from IN 1 to IN 4)
10	OUTPUT 15-pin HD Connector	Connect to the video acceptor
11	IN 1 LOOP 15-pin HD Connector	Connect input 1 to an additional video acceptor
12	RS-232 9-pin D-sub Port	Connects to the PC or the RS-232 Remote Controller
13	REMOTE Terminal Block Connectors	Connect to a contact closure switch
14	PRIORITY AUTO DIP-switches	Set the input priority (see Section 5.2)
15	REMOTE IR 3.5mm Mini Connector	Connect to an external IR receiver for controlling the machine via an IR remote controller (instead of using the front panel IR receiver) ¹
16	12V DC	+12V DC connector for powering the unit

¹ Can be used instead of the front panel (built-in) IR receiver to remotely control the machine

Figure 2 and Table 2 define the underside of the **VP-411DS**:

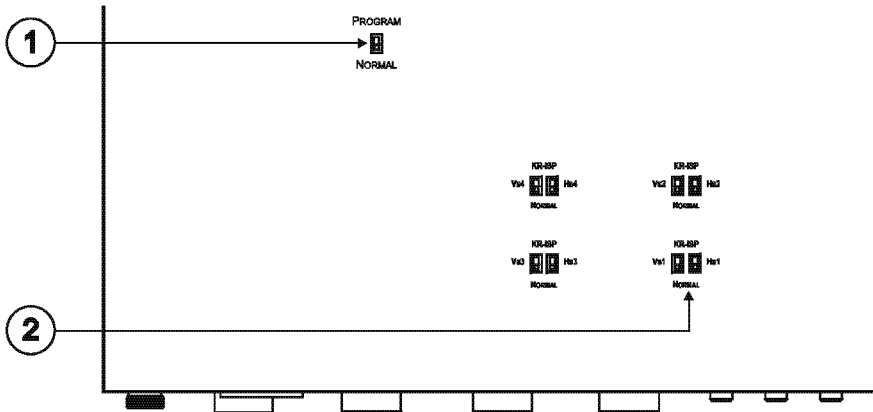


Figure 2: VP-411DS 4x1 Automatic UXGA / Audio Switcher Underside

Table 2: VP-411DS 4x1 Automatic UXGA / Audio Switcher Underside Features

#	Feature	Function
1	PROGRAM / NORMAL Switch	Set to NORMAL for normal operation (default), or set to PROGRAM to upgrade to the latest Kramer firmware via RS-232 (see Section 6)
2	Vs and Hs Switch (from 1 to 4)	Slide the switch to NORMAL for standard sync detection ¹ Slide the switch to KR-ISP™ for crisp technology

4.1 Using the IR Transmitter

You can use the **RC-IR3** IR transmitter to control the machine via the built-in IR receiver on the front panel or, instead, via an optional external IR receiver². The external IR receiver can be located 15 meters away from the machine. This distance can be extended to up to 60 meters when used with three extension cables³

Before using the external IR receiver, be sure to arrange for your Kramer dealer to insert the internal IR connection cable⁴ with the 3.5mm connector that fits into the REMOTE IR opening on the rear panel. Connect the external IR receiver to the REMOTE IR 3.5mm connector.

1 By default, both switches are set to NORMAL

2 Model: C-A35M/IRR-50

3 Model: C-A35M/A35F-50

4 P/N: 505-70434010-S

5 Connecting the VP-411DS 4x1 Automatic UXGA / Audio Switcher

This section describes how to:

- Connect the **VP-411DS** (see [Section 5.1](#))
- Select the default master source signal (see [Section 5.2](#))
- Connect the REMOTE connector (see [Section 5.3](#))
- Connect a PC (see [Section 5.4](#))

5.1 Connecting the VP-411DS 4x1 Automatic UXGA / Audio Switcher

To connect your **VP-411DS**¹, as illustrated in the example in [Figure 3](#):

1. Connect up to four² UXGA/AUDIO sources (for example, computer graphics sources) to the UXGA IN 15-pin HD connectors and to the AUDIO IN 3.5mm mini connector³.
2. Connect the UXGA OUTPUT 15-pin HD connector and the AUDIO OUTPUT 3.5mm mini connector to the acceptor³ (for example, a display and speakers).
3. If required, connect a local display to the UXGA IN 1 LOOP 15-pin HD connector.
4. Set the PRIORITY DIP-switches (see [Section 5.2](#)).
5. If required, connect:
 - The contact closure remote control PINS (see [Section 5.3](#))
 - PC and/or controller to the RS-232 port (see [Section 5.4](#))
6. Connect the 12V DC power adapter to the power socket and connect the adapter to the mains electricity.

1 Switch OFF the power on each device before connecting it to your VP-411DS. After connecting your VP-411DS, switch on its power and then switch on the power on each device

2 You do not have to connect all the inputs

3 Audio connections are not shown in [Figure 3](#)

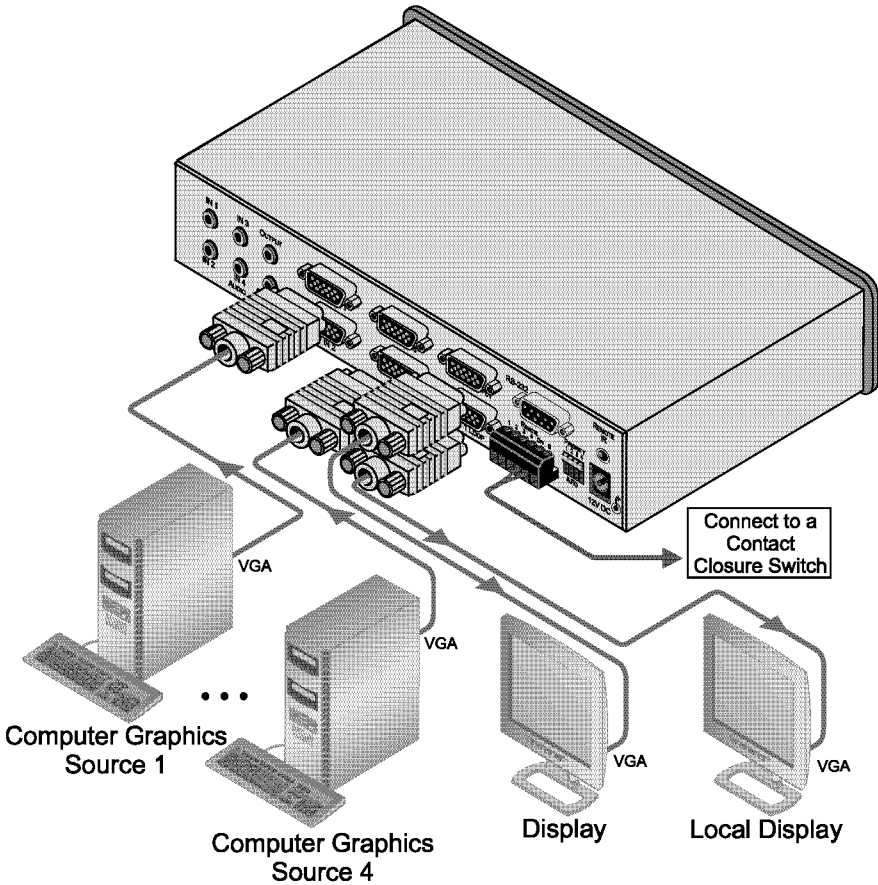


Figure 3: VP-411DS 4x1 Automatic UXGA / Audio Switcher Connections

5.2 Setting the PRIORITY DIP-switches

Figure 4 and Table 3 describe the **VP-411DS** unit DIP-switches and the priority setup respectively.

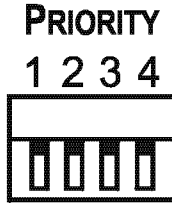


Figure 4: VP-411DS DIP-switches

Table 3: DIP-switch Priority Setup

Priority sequence	DIP-switch Position			
	1	2	3	4
Manual operation	OFF	OFF	OFF	OFF
1, 2, 3, 4	ON	OFF	OFF	OFF
2, 3, 4, 1	OFF	ON	OFF	OFF
3, 4, 1, 2	OFF	OFF	ON	OFF
4, 1, 2, 3	OFF	OFF	OFF	ON

When all the DIP-switches are set to OFF, switching is manual and the inputs are switched to the output via the front panel INPUT SELECTOR buttons.

The priority is always set from the lowest number to the highest. For example, if input 2 is set to be the primary input (DIP-switch 2 is set to ON and DIP-switches 1, 3 and 4 are set to OFF), the secondary input is IN 3. IN 4 is the third in the sequence, and IN 1 will be last in priority. In this case, if the signal on IN 2 is cut off, the switcher automatically switches IN 3 to the output, and if that is also disconnected, IN 4 is automatically switched to the output (followed by IN 1, if necessary). If, in the meantime, the IN 2 signal is restored, IN 2 will take priority once again.

When sending a serial switching command while the **VP-411DS** is in Priority Mode, the **VP-411DS** checks for an active signal on the selected input for a user-defined period of time (the default is 30 seconds). Once an active signal is detected, the selected input will be switched to the output. If no active signal is detected during the set time period, the previously selected input will remain switched to the output according to the priority setup, and the **VP-411DS** will send an appropriate RS-232 command to indicate its current switching status or an “all inputs invalid” command if there is no valid input.

5.3 Connecting the REMOTE Terminal Block

The contact closure remote control pins operate in a similar way to the INPUT selector button. Using the contact closure remote control you can select the UXGA input or cut off the inputs. To do so, temporarily connect the required input¹ pin on the REMOTE terminal block to the GND (Ground) pin, as [Figure 5](#) illustrates.

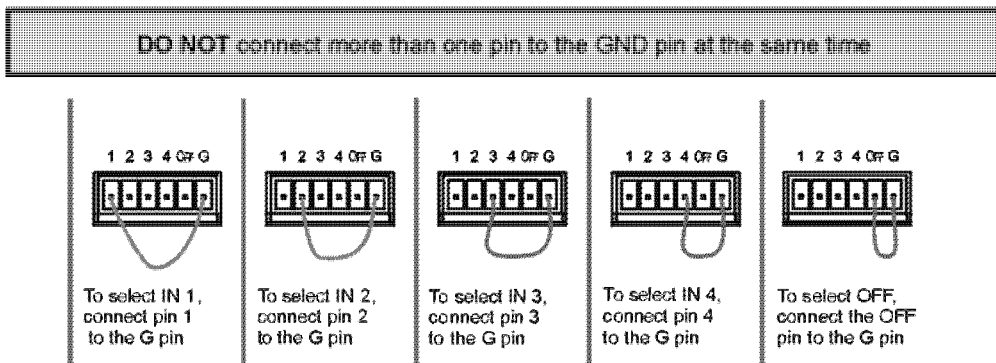


Figure 5: Connecting the Contact Closure Remote Control Pins

¹ IN 1, IN 2, IN 3 IN 4, or OFF

5.4 Connecting a PC

You can connect a PC (or other controller) to the **VP-411DS** via the RS-232 port for remote control, and for upgrading the firmware.

To connect a PC to a **VP-411DS** unit, using the Null-modem adapter provided with the machine (recommended):

- Connect the RS-232 9-pin D-sub rear panel port on the **VP-411DS** unit to the Null-modem adapter and connect the Null-modem adapter with a 9-wire flat cable to the RS-232 9-pin D-sub port on your PC

To connect a PC to a **VP-411DS** unit, without using a Null-modem adapter:

- Connect the RS-232 9-pin D-sub port on your PC to the RS-232 9-pin D-sub rear panel port on the **VP-411DS** unit, forming a cross-connection¹, as [Figure 6](#) illustrates

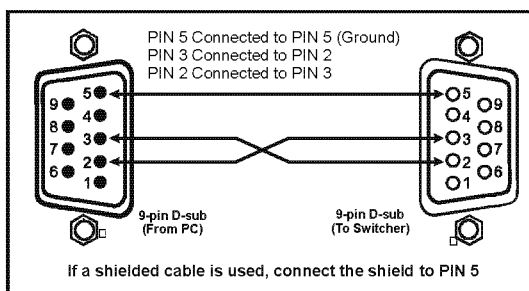


Figure 6: Connecting a PC

¹ Also known as a Null-modem connection

6 Flash Memory Upgrade

The **VP-411DS** firmware is located in FLASH memory, which lets you upgrade to the latest Kramer firmware version in minutes! The process involves:

- Downloading from the Internet (see [Section 6.1](#))
- Connecting the PC to the RS-232 port (see [Section 6.2](#))
- Upgrading Firmware (see [Section 6.3](#))

6.1 Downloading from the Internet

You can download the up-to-date file¹ from the Internet. To do so:

1. Go to our Web site at <http://www.kramerelectronics.com> and download the file: “*VP-411DS_XX.zip*” from the Technical Support section.
2. Extract the file: “*VP-411DS_XX.zip*” to a folder (for example, C:\Program Files\Kramer Flash).
3. Create a shortcut on your desktop to the file: “*Flash Magic.EXE*”².

6.2 Connecting the PC to the RS-232 Port

Before installing the latest Kramer firmware version on a **VP-411DS** unit, do the following:

1. Turn the power OFF on the **VP-411DS** unit.
2. Connect the RS-232 9-pin D-sub rear panel port on the **VP-411DS** unit to the Null-modem adapter and connect the Null-modem adapter with a 9-wire flat cable to the RS-232 9-pin D-sub COM port on your PC (see [Section 5.4](#)).
3. On the underside panel, using a screwdriver, slide the switch to PROGRAM.
4. Switch on the power on the **VP-411DS** unit.

¹ The files indicated in this section are given as an example only. File names are liable to change from time to time

² To download up-to-date Flash Magic software, go to <http://www.flashmagictool.com/>

6.3 Upgrading Firmware

Follow these steps to upgrade the firmware:

1. Double click the desktop icon: “Flash Magic.EXE”.
The Flash Magic screen appears as illustrated in Figure 7.

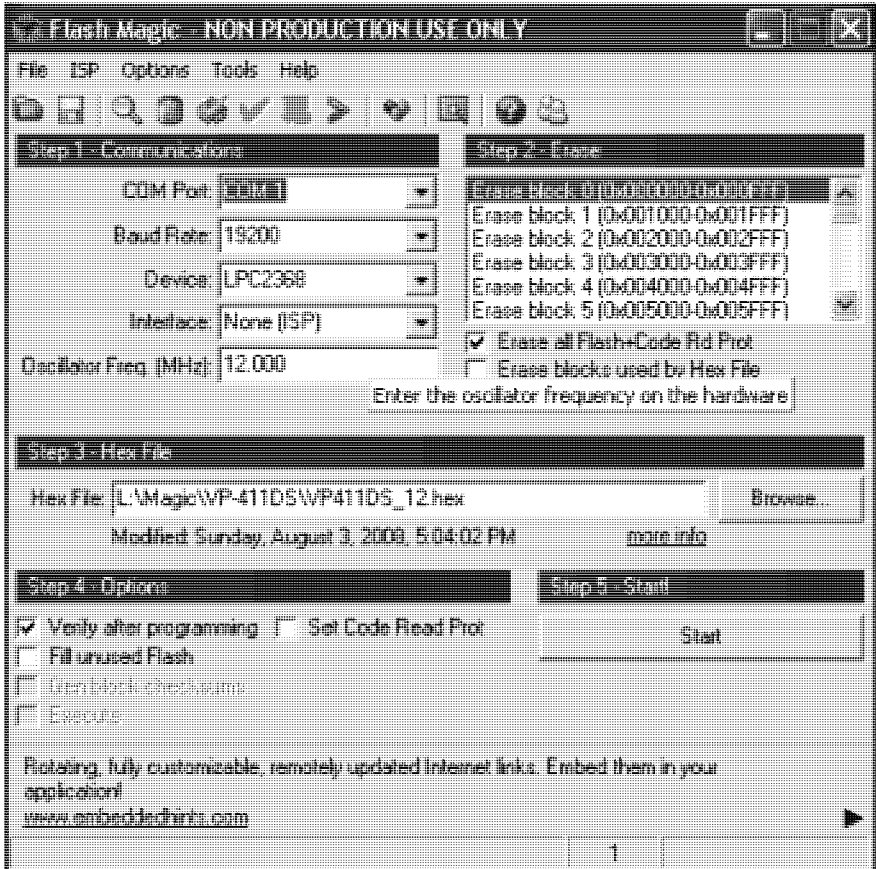
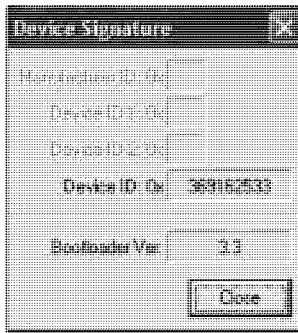


Figure 7: Flash Magic Screen

2. Under the “Step 1 – Communications” area, set the definitions on the screen as follows:
 - COM Port: select the active COM port on your computer
 - Baud Rate: 19200
 - Device: LPC2368
 - Interface: None (ISP)
 - Oscillator Freq. (MHz): 12.000
3. Under the “Step 2 – Erase” area, check the “Erase all Flash+Code Rd Prot” box.
4. Under the “Step 3 – Hex File” area select the hex file. For example, select “*VP-411DS_12.hex*”.
5. Under the “Step 4 – Options” area, check the “Verify after programming” box.
6. In order to verify communication, select "Read device signature" from the ISP menu. You should get a response as the example below:



7. Under the “Step 5 – Start!” area, press the start button and wait for the completion of the process.
8. Close the “Flash Magic” window.
9. Turn the power OFF on the **VP-411DS** unit.
10. Disconnect the *RS-232* rear panel port on the **VP-411DS** unit from the Null-modem adapter.
11. On the underside panel, slide the switch to NORMAL.
12. Turn the power ON on the **VP-411DS** unit.

7 Technical Specifications

Table 4 includes the technical specifications:

Table 4: Technical Specifications¹ of the VP-411DS

INPUTS:	4 UXGA on 15-pin HD connectors 4 unbalanced stereo audio on 3.5mm mini audio connectors	
OUTPUTS:	1 UXGA on a 15-pin HD connector 1 UXGA on a 15-pin HD connector (IN 1 LOOP) 2 unbalanced stereo audio on a 3.5mm mini audio connector	
MAX. OUTPUT LEVEL:	VIDEO: 1.8Vpp	AUDIO: 7.2Vpp
BANDWIDTH (-3dB):	VIDEO: 300MHz	AUDIO: >40kHz
DIFF. GAIN:	0.03%	
DIFF. PHASE:	0.06 Deg	
K-FACTOR:	<0.05%	
S/N RATIO:	VIDEO: 73dB @ 5MHz	AUDIO: 93dB
CROSSTALK (all hostile):	VIDEO: -50dB	AUDIO: -72dB @ 1kHz
CONTROLS:	Input selector; PANEL LOCK and OFF pushbuttons; IR remote control reception window; connector for extended IR reception; RS-232 connector; contact closure terminal block for external wire switching; inputs priority selector DIP-switches; normal/KR-ISP™ and program/normal mode selectors via slide switches on the underside.	
COUPLING:	VIDEO: DC	AUDIO: DC
AUDIO THD + NOISE:	0.004% @1kHz	
AUDIO 2nd HARMONIC:	0.002% @1kHz	
POWER SOURCE:	12V, 230mA	
DIMENSIONS:	21.5cm x 16.25cm x 4.36cm (8.46" x 6.4" x 1.7") W, D, H	
WEIGHT:	1.1kg (2.43lb) approx.	
ACCESSORIES:	Power supply, IR remote control	
OPTIONS:	RK-1 19" rack adapter, external remote IR receiver cable ²	

8 Table of Hex Codes for Serial Communication

Table 5 lists the hex values:

Table 5: VP-411DS Hex Codes for Switching via RS-232

	OUT 1
IN 1	01, 81, 81, 81
IN 2	01, 82, 81, 81
IN 3	01, 83, 81, 81
IN 4	01, 84, 81, 81

¹ Specifications are subject to change without notice

² P/N: C-A35M/IRR-50



9 Kramer Protocol 2000

The **VP-411DS** is compatible with Kramer's Protocol¹ 2000 (version 0.50) (below). This RS-232/RS-485 communication protocol uses four bytes of information as defined below. For RS-232, a null-modem connection between the machine and controller is used. The default data rate is 9600 baud, with no parity, 8 data bits and 1 stop bit.

Note: compatible with Kramer's Protocol 2000 does not imply that a machine includes all of the commands below. Each machine uses a sub-set of Protocol 2000, according to its needs.

Table 6: Protocol Definitions

MSB								LSB
		DESTI-NATION	INSTRUCTION					
0	D	N5	N4	N3	N2	N1	N0	
7	6	5	4	3	2	1	0	
1st byte								
		INPUT						
1	I6	I5	I4	I3	I2	I1	I0	
7	6	5	4	3	2	1	0	
2nd byte								
		OUTPUT						
1	O6	O5	O4	O3	O2	O1	O0	
7	6	5	4	3	2	1	0	
3rd byte								
		MACHINE NUMBER						
1	OVR	X	M4	M3	M2	M1	M0	
7	6	5	4	3	2	1	0	
4th byte								

1st BYTE: Bit 7 – Defined as 0.

D – “DESTINATION”: 0 - for sending information to the switchers (from the PC);

1 - for sending to the PC (from the switcher).

N5...N0 – “INSTRUCTION”

The function that is to be performed by the switcher(s) is defined by the INSTRUCTION (6 bits). Similarly, if a function is performed via the machine's keyboard, then these bits are set with the INSTRUCTION NO., which was performed. The instruction codes are defined according to the table below (INSTRUCTION NO. is the value to be set for N5...N0).

2nd BYTE: Bit 7 – Defined as 1.

I6...I0 – “INPUT”.

When switching (ie. instruction codes 1 and 2), the INPUT (7 bits) is set as the input number which is to be switched. Similarly, if switching is done via the machine's front-panel, then these bits are set with the INPUT NUMBER which was switched. For other operations, these bits are defined according to the table.

3rd BYTE: Bit 7 – Defined as 1.

O6...O0 – “OUTPUT”.

When switching (ie. instruction codes 1 and 2), the OUTPUT (7 bits) is set as the output number which is to be switched. Similarly, if switching is done via the machine's front-panel, then these bits are set with the OUTPUT NUMBER which was switched. For other operations, these bits are defined according to the table.

¹ You can download our user-friendly “Software for Calculating Hex Codes for Protocol 2000” from the technical support section on our Web site at <http://www.kramerelectronics.com>

4th BYTE: Bit 7 – Defined as 1.

- Bit 5 – Don't care.
- OVR – Machine number override.
- M4...M0 – MACHINE NUMBER.

Used to address machines in a system via their machine numbers. When several machines are controlled from a single serial port, they are usually configured together with each machine having an individual machine number. If the OVR bit is set, then all machine numbers will accept (implement) the command, and the addressed machine will reply.

For a single machine controlled via the serial port, always set M4...M0 = 1, and make sure that the machine itself is configured as MACHINE NUMBER = 1.

Table 7: Instruction Codes for Protocol 2000

Note: All values in the table are decimal, unless otherwise stated.

INSTRUCTION		DEFINITION FOR SPECIFIC INSTRUCTION		NOTE
#	DESCRIPTION	INPUT	OUTPUT	
0	RESET	0	0	1
1	SWITCH INPUT	Set equal to video input which is to be switched (0 = disconnect)	1	2
5	REQUEST STATUS OF A VIDEO OUTPUT	0	Equal to output number whose status is reqd	3
7	SET SIGNAL WAIT DELAY (in priority switching)	0 – 100 the number of seconds of delay (the default signal delay wait is 30 seconds)	64	2, 28
10	REQUEST SIGNAL WAIT DELAY (in priority switching)	0	0	4
15	REQUEST WHETHER VALID INPUT IS DETECTED	Input # or 127 for request if any input detected	1	8
16	ERROR / BUSY	For invalid / valid input (i.e. OUTPUT byte = 4 or OUTPUT byte = 5), this byte is set as the input # or 127 if all inputs become invalid	0 - error 1 - invalid instruction 2 - out of range 3 - machine busy 4 - invalid input 5 - valid input 6 - RX buffer overflow	9, 25
30	LOCK FRONT PANEL	Panel unlocked Panel locked	0	2
31	REQUEST WHETHER PANEL IS LOCKED	0	0	7
61	IDENTIFY MACHINE	video machine name video software version	Request first 4 digits Request first suffix	5
62	DEFINE MACHINE	number of inputs number of outputs	for video for audio	6

NOTES on the above table:

NOTE 1 - When the master switcher is reset, (e.g. when it is turned on), the reset code is sent to the PC. If this code is sent to the switchers, it will reset according to the present power-down settings.

NOTE 2 - These are bi-directional definitions. That is, if the switcher receives the code, it will perform the instruction; and if the instruction is performed (due to a keystroke operation on the front panel), then these codes are sent. For example, if the HEX code:

01 85 88 83

was sent from the PC, then the switcher (machine 3) will switch input 5 to output 8. If the user switched input 1 to output 7 via the front panel keypad, then the switcher will send HEX codes:

41 81 87 83

to the PC.

When the PC sends one of the commands in this group to the switcher, then, if the instruction is valid, the switcher replies by sending to the PC the same four bytes that it was sent (except for the first byte, where the DESTINATION bit is set high).

NOTE 3 - The reply to a "REQUEST" instruction is as follows: the same instruction and INPUT codes as were sent are returned, and the OUTPUT is assigned the value of the requested parameter. The replies to instructions 10 and 11 are as per the definitions in instructions 7 and 8 respectively. For example, if the present status of machine number 5 is breakaway setting, then the reply to the HEX code:



0B 80 80 85
 would be HEX codes:
 4B 80 81 85

NOTE 4 - An error code is returned to the PC if an invalid instruction code was sent to the switcher, or if a parameter associated with the instruction is out of range (e.g. trying to save to a setup greater than the highest one, or trying to switch an input or output greater than the highest one defined). This code is also returned to the PC if an RS-232 instruction is sent while the machine is being programmed via the front panel. Reception of this code by the switcher is not valid.

NOTE 5 - This is a request to identify the switcher/s in the system. If the OUTPUT is set as 0, and the INPUT is set as 1 the machine will send its name. The reply is the decimal value of the INPUT and OUTPUT. For example, for a 2216, the reply to the request to send the audio machine name would be (HEX codes):

7D 96 90 81 (i.e. 128dec+ 22dec for 2nd byte, and 128dec+ 16dec for 3rd byte).

If the request for identification is sent with the INPUT set as 3 the appropriate machine will send its software version number. Again, the reply would be the decimal value of the INPUT and OUTPUT - the INPUT representing the number in front of the decimal point, and the OUTPUT representing the number after it. For example, for version 3.5, the reply to the request to send the version number would be (HEX codes):

7D 83 85 81 (i.e. 128dec+ 3dec for 2nd byte, 128dec+ 5dec for 3rd byte).

If the OUTPUT is set as 1, then the ASCII coding of the lettering following the machine's name is sent. For example, for the VS-7588YC, the reply to the request to send the first suffix would be (HEX codes):

7D D9 C3 81 (i.e. 128dec+ ASCII for "Y"; 128dec+ ASCII for "C").

NOTE 6 - The number of inputs and outputs refers to the specific machine which is being addressed, not to the system. For example, if six 16X16 matrices are configured to make a 48X32 system (48 inputs, 32 outputs), the reply to the HEX code:

3E 82 81 82 (ie. request the number of outputs)

would be HEX codes:

7E 82 90 82

ie. 16 outputs

NOTE 7 - The reply to the "REQUEST WHETHER PANEL IS LOCKED" is as in NOTE 3 above, except that here the OUTPUT is assigned with the value 0 if the panel is unlocked, or 1 if it is locked.

NOTE 8 - The reply to the request is as follows: the same INSTRUCTION and INPUT codes as were sent are returned and the OUTPUT is assigned with the value 0 if no valid input is detected; or 1 if valid input is detected.

NOTE 9 - An error code is returned to the PC if an invalid instruction code was sent to the switcher, or if a parameter associated with the instruction is out of range (e.g. trying to save to a setup greater than the highest one, or trying to switch an input or output greater than the highest one defined). This code is also returned to the PC if an RS-232 instruction is sent while the machine is being programmed via the front panel. Reception of this code by the switcher is not valid.

NOTE 25 - For units which detect the validity of the video inputs, Instruction 16 will be sent whenever the unit detects a change in the state of an input (in real-time).

For example, if input 3 is detected as invalid, the unit will send the HEX codes:

10 83 84 81

If input 7 is detected as valid, then the unit will send HEX codes:

10 87 85 81.

NOTE 28 - In the automatic priority switch mode, in the case where the user tries to switch manually, and there is no valid input the unit will wait the number of seconds configured by this command until the input becomes valid and then execute the switching. If during this delay the input remains invalid the switching will not execute.

LIMITED WARRANTY

Kramer Electronics (hereafter *Kramer*) warrants this product free from defects in material and workmanship under the following terms.

HOW LONG IS THE WARRANTY

Labor and parts are warranted for seven years from the date of the first customer purchase.

WHO IS PROTECTED?

Only the first purchase customer may enforce this warranty.

WHAT IS COVERED AND WHAT IS NOT COVERED

Except as below, this warranty covers all defects in material or workmanship in this product. The following are not covered by the warranty:

1. Any product which is not distributed by Kramer, or which is not purchased from an authorized Kramer dealer. If you are uncertain as to whether a dealer is authorized, please contact Kramer at one of the agents listed in the Web site www.kramerelectronics.com.
2. Any product, on which the serial number has been defaced, modified or removed, or on which the WARRANTY VOID IF TAMPERED sticker has been torn, reattached, removed or otherwise interfered with.
3. Damage, deterioration or malfunction resulting from:
 - i) Accident, misuse, abuse, neglect, fire, water, lightning or other acts of nature
 - ii) Product modification, or failure to follow instructions supplied with the product
 - iii) Repair or attempted repair by anyone not authorized by Kramer
 - iv) Any shipment of the product (claims must be presented to the carrier)
 - v) Removal or installation of the product
 - vi) Any other cause, which does not relate to a product defect
 - vii) Cartons, equipment enclosures, cables or accessories used in conjunction with the product

WHAT WE WILL PAY FOR AND WHAT WE WILL NOT PAY FOR

We will pay labor and material expenses for covered items. We will not pay for the following:

1. Removal or installations charges.
2. Costs of initial technical adjustments (set-up), including adjustment of user controls or programming. These costs are the responsibility of the Kramer dealer from whom the product was purchased.
3. Shipping charges.

HOW YOU CAN GET WARRANTY SERVICE

1. To obtain service on you product, you must take or ship it prepaid to any authorized Kramer service center.
2. Whenever warranty service is required, the original dated invoice (or a copy) must be presented as proof of warranty coverage, and should be included in any shipment of the product. Please also include in any mailing a contact name, company, address, and a description of the problem(s).
3. For the name of the nearest Kramer authorized service center, consult your authorized dealer.

LIMITATION OF IMPLIED WARRANTIES

All implied warranties, including warranties of merchantability and fitness for a particular purpose, are limited in duration to the length of this warranty.

EXCLUSION OF DAMAGES

The liability of Kramer for any effective products is limited to the repair or replacement of the product at our option. Kramer shall not be liable for:

1. Damage to other property caused by defects in this product, damages based upon inconvenience, loss of use of the product, loss of time, commercial loss, or;
2. Any other damages, whether incidental, consequential or otherwise. Some countries may not allow limitations on how long an implied warranty lasts and/or do not allow the exclusion or limitation of incidental or consequential damages, so the above limitations and exclusions may not apply to you.

This warranty gives you specific legal rights, and you may also have other rights, which vary from place to place.

NOTE: All products returned to Kramer for service must have prior approval. This may be obtained from your dealer.

This equipment has been tested to determine compliance with the requirements of:

- EN-50081: "Electromagnetic compatibility (EMC); generic emission standard.
Part 1: Residential, commercial and light industry"
- EN-50082: "Electromagnetic compatibility (EMC) generic immunity standard.
Part 1: Residential, commercial and light industry environment".
- CFR-47: FCC* Rules and Regulations:
Part 15: "Radio frequency devices
Subpart B Unintentional radiators"


CAUTION!

- Servicing the machines can only be done by an authorized Kramer technician. Any user who makes changes or modifications to the unit without the expressed approval of the manufacturer will void user authority to operate the equipment.
- Use the supplied DC power supply to feed power to the machine.
- Please use recommended interconnection cables to connect the machine to other components.
* FCC and CE approved using STP cable (for twisted pair products)





For the latest information on our products and a list of Kramer distributors, visit www.kramerelectronics.com where updates to this user manual may be found. We welcome your questions, comments and feedback.

 <p>Caution</p>	<p>Safety Warning Disconnect the unit from the power supply before opening/servicing.</p>
---	--

