

**Kramer Electronics, Ltd.**



# **USER MANUAL**

**Model:**

**PT-101H**

*HDMI Repeater*

## Contents

<b>1</b>	<b>Introduction</b>	<b>1</b>
<b>2</b>	<b>Getting Started</b>	<b>1</b>
2.1	Quick Start	1
<b>3</b>	<b>Overview</b>	<b>3</b>
<b>4</b>	<b>Your PT-101H HDMI Repeater</b>	<b>4</b>
<b>5</b>	<b>Connecting a PT-101H HDMI Repeater</b>	<b>5</b>
<b>6</b>	<b>Technical Specifications</b>	<b>6</b>

## Figures

Figure 1: PT-101H HDMI Repeater	4
Figure 2: Connecting the PT-101H HDMI Repeater	5

## Tables

Table 1: PT-101H HDMI Repeater Features	4
Table 2: Technical Specifications of the PT-101H	6

## 1 Introduction

Welcome to Kramer Electronics! Since 1981, Kramer Electronics has been providing a world of unique, creative, and affordable solutions to the vast range of problems that confront the video, audio, presentation, and broadcasting professional on a daily basis. In recent years, we have redesigned and upgraded most of our line, making the best even better! Our 1,000-plus different models now appear in 11 groups<sup>1</sup> that are clearly defined by function.

Congratulations on purchasing your **PT-101H HDMI Repeater**, which is ideal for:

- Multi-media installations
- Home cinema installations

**Note, that the Kramer PT-101H is identical to the PT-101HDMI; just the name has changed replacing the suffix “HDMI” by “H” (according to the HDMI Guideline).**

The package includes the following items:

- **PT-101H HDMI Repeater**
- Power adapter (12V DC Input)
- This user manual<sup>2</sup>

## 2 Getting Started

We recommend that you:

- Unpack the equipment carefully and save the original box and packaging materials for possible future shipment
- Review the contents of this user manual
- Use Kramer high performance high resolution cables<sup>3</sup>

### 2.1 Quick Start

This quick start chart summarizes the basic setup and operation steps.

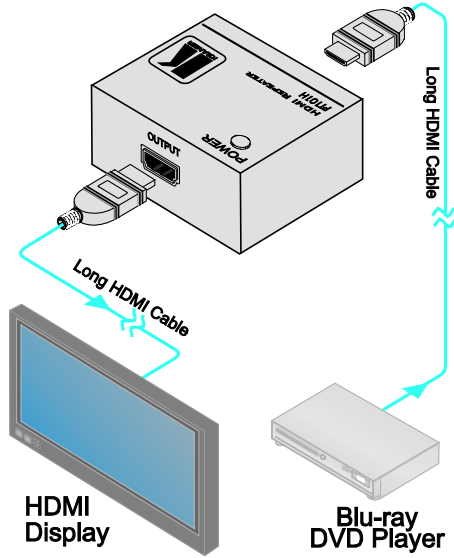
---

<sup>1</sup> GROUP 1: Distribution Amplifiers; GROUP 2: Switchers and Matrix Switchers; GROUP 3: Control Systems; GROUP 4: Format/Standards Converters; GROUP 5: Range Extenders and Repeaters; GROUP 6: Specialty AV Products; GROUP 7: Scan Converters and Scalers; GROUP 8: Cables and Connectors; GROUP 9: Room Connectivity; GROUP 10: Accessories and Rack Adapters; GROUP 11: Sierra Products

<sup>2</sup> Download up-to-date Kramer user manuals from our Web site: <http://www.kramerelectronics.com>

<sup>3</sup> The complete list of Kramer cables is on our Web site at <http://www.kramerelectronics.com>

**Step 1: Connect the Input/output - see section 5**



**Step 2: Connect the power**

### 3 Overview

The Kramer Pico TOOLS **PT-101H**:

- Is a high quality repeater for HDMI 1.3a version signals that connects between an HDMI source and an HDMI display
- Extends the transmission range. For example, to up to 15m for 1080i resolution
- Features reclocking and equalization

To achieve the best performance:

- Connect only good quality connection cables, thus avoiding interference, deterioration in signal quality due to poor matching, and elevated noise levels (often associated with low quality cables)
- Avoid interference from neighboring electrical appliances that may adversely influence signal quality and position your Kramer **PT-101H** away from moisture, excessive sunlight and dust



**Caution** – No operator-serviceable parts inside unit.

**Warning** – Use only the Kramer Electronics input power wall adapter that is provided with this unit<sup>1</sup>.

**Warning** – Disconnect power and unplug unit from wall before installing or removing device or servicing unit.

<sup>1</sup> For example: model number AD2512C, part number 2535-000251

## 4 Your PT-101H HDMI Repeater

Figure 1 and Table 1 define the **PT-101H HDMI Repeater**:

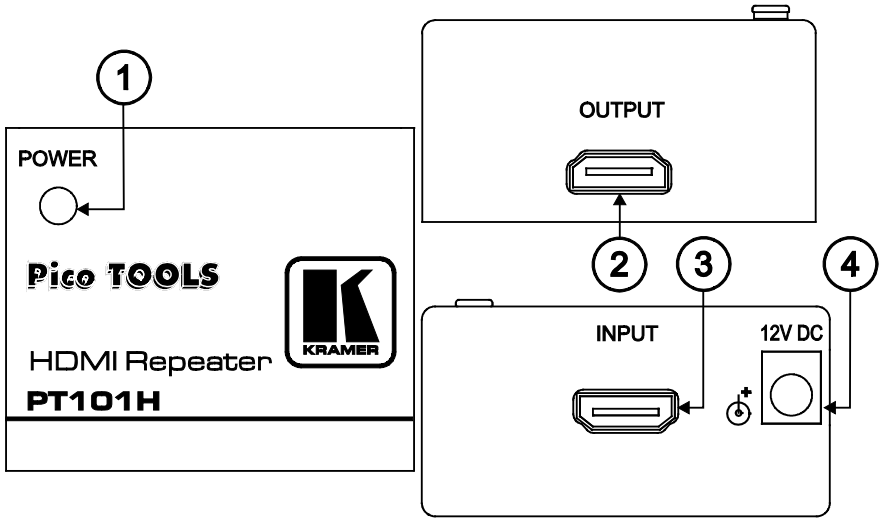


Figure 1: PT-101H HDMI Repeater

Table 1: PT-101H HDMI Repeater Features

#	Feature	Function
1	POWER LED	Illuminates when receiving power. The POWER LED is colored: Green, when the 12V DC power source is connected but no input signal is received Red, when an input signal is received and the 12V DC power source is disconnected Orange when both the 12V DC power source is connected and an input signal is received
2	OUTPUT Connector	Connect to the HDMI acceptor
3	INPUT Connector	Connect to the HDMI source
4	12V DC	+12V DC connector for powering the unit

## 5 Connecting a PT-101H HDMI Repeater

To connect the **PT-101H**, as illustrated in the example in Figure 2, do the following:

1. Connect the HDMI source (for example, a blu-ray DVD player) to the INPUT connector.
2. Connect the OUTPUT connector to an HDMI acceptor (for example, an HDMI display).
3. Connect the 12V DC power adapter to the power socket on the **PT-101H** and connect the adapter to the mains electricity.  
The **PT-101H** can be powered from the HDMI source, but for maximum performance we recommend using the power supply (supplied).

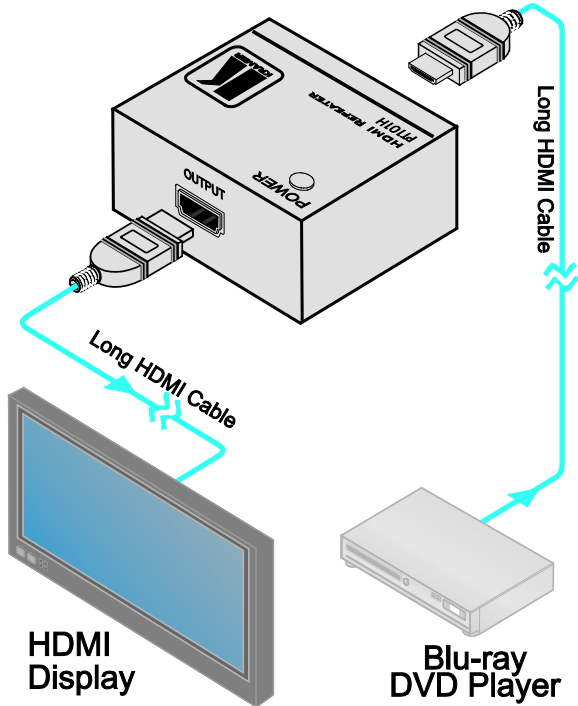


Figure 2: Connecting the PT-101H HDMI Repeater

## 6 Technical Specifications

Table 2 includes the technical specifications:

*Table 2: Technical Specifications<sup>1</sup> of the PT-101H*

INPUT:	1 HDMI Connector
OUTPUT:	1 HDMI Connector
BANDWIDTH:	Supports up to 2.25Gbps bandwidth
COMPLIANCE WITH HDMI STANDARD:	Supports HDMI 1.3a
POWER SOURCE:	12V DC 120mA
DIMENSIONS:	6.22cm x 5.23cm x 3.20cm (2.5" x 2.1" x 1.3"), W, D, H
WEIGHT:	0.07kg (0.16lbs) approx.
ACCESSORIES:	Power supply, mounting bracket
OPTIONS:	Kramer HDMI cables <sup>2</sup>

---

<sup>1</sup> Specifications are subject to change without notice

<sup>2</sup> For best results, use Kramer cables such as the C-HM/HM series, the C-HM/DM series and/or our HDMI over fiber optics C-FOHM/FOHM series



---

## LIMITED WARRANTY

Kramer Electronics (hereafter *Kramer*) warrants this product free from defects in material and workmanship under the following terms.

### HOW LONG IS THE WARRANTY

Labor and parts are warranted for seven years from the date of the first customer purchase.

### WHO IS PROTECTED?

Only the first purchase customer may enforce this warranty.

### WHAT IS COVERED AND WHAT IS NOT COVERED

Except as below, this warranty covers all defects in material or workmanship in this product. The following are not covered by the warranty:

1. Any product which is not distributed by Kramer, or which is not purchased from an authorized Kramer dealer. If you are uncertain as to whether a dealer is authorized, please contact Kramer at one of the agents listed in the Web site [www.kramerelectronics.com](http://www.kramerelectronics.com).
2. Any product, on which the serial number has been defaced, modified or removed, or on which the WARRANTY VOID IF TAMPERED sticker has been torn, reattached, removed or otherwise interfered with.
3. Damage, deterioration or malfunction resulting from:
  - i) Accident, misuse, abuse, neglect, fire, water, lightning or other acts of nature
  - ii) Product modification, or failure to follow instructions supplied with the product
  - iii) Repair or attempted repair by anyone not authorized by Kramer
  - iv) Any shipment of the product (claims must be presented to the carrier)
  - v) Removal or installation of the product
  - vi) Any other cause, which does not relate to a product defect
  - vii) Cartons, equipment enclosures, cables or accessories used in conjunction with the product

### WHAT WE WILL PAY FOR AND WHAT WE WILL NOT PAY FOR

We will pay labor and material expenses for covered items. We will not pay for the following:

1. Removal or installations charges.
2. Costs of initial technical adjustments (set-up), including adjustment of user controls or programming. These costs are the responsibility of the Kramer dealer from whom the product was purchased.
3. Shipping charges.

### HOW YOU CAN GET WARRANTY SERVICE

1. To obtain service on you product, you must take or ship it prepaid to any authorized Kramer service center.
2. Whenever warranty service is required, the original dated invoice (or a copy) must be presented as proof of warranty coverage, and should be included in any shipment of the product. Please also include in any mailing a contact name, company, address, and a description of the problem(s).
3. For the name of the nearest Kramer authorized service center, consult your authorized dealer.

### LIMITATION OF IMPLIED WARRANTIES

All implied warranties, including warranties of merchantability and fitness for a particular purpose, are limited in duration to the length of this warranty.

### EXCLUSION OF DAMAGES

The liability of Kramer for any effective products is limited to the repair or replacement of the product at our option. Kramer shall not be liable for:

1. Damage to other property caused by defects in this product, damages based upon inconvenience, loss of use of the product, loss of time, commercial loss; or:
2. Any other damages, whether incidental, consequential or otherwise. Some countries may not allow limitations on how long an implied warranty lasts and/or do not allow the exclusion or limitation of incidental or consequential damages, so the above limitations and exclusions may not apply to you.

This warranty gives you specific legal rights, and you may also have other rights, which vary from place to place.

**NOTE:** All products returned to Kramer for service must have prior approval. This may be obtained from your dealer.

This equipment has been tested to determine compliance with the requirements of:

- EN-50081: "Electromagnetic compatibility (EMC);  
generic emission standard.  
Part 1: Residential, commercial and light industry"
- EN-50082: "Electromagnetic compatibility (EMC) generic immunity standard.  
Part 1: Residential, commercial and light industry environment".
- CFR-47: FCC\* Rules and Regulations:  
Part 15: "Radio frequency devices  
Subpart B Unintentional radiators"

### CAUTION!

- Servicing the machines can only be done by an authorized Kramer technician. Any user who makes changes or modifications to the unit without the expressed approval of the manufacturer will void user authority to operate the equipment.
- Use the supplied DC power supply to feed power to the machine.
- Please use recommended interconnection cables to connect the machine to other components.

\* FCC and CE approved using STP cable (for twisted pair products)





---

**For the latest information on our products and a list of Kramer distributors, visit our Web site: [www.kramerelectronics.com](http://www.kramerelectronics.com), where updates to this user manual may be found. We welcome your questions, comments and feedback.**



**Caution**

**Safety Warning:**

Disconnect the unit from the power supply before opening/servicing.



---

**Kramer Electronics, Ltd.**

Web site: [www.kramerelectronics.com](http://www.kramerelectronics.com)

E-mail: [info@kramerel.com](mailto:info@kramerel.com)

P/N: 2900-000660 REV 1