

Solid|Drive[®]

SOUND | WITHOUT SPEAKERS[™]

INSTALLATION & USE GUIDE

FOR SOLIDDRIVE SD1 INTO WALLS AND
CEILINGS WITH EXISTING DRYWALL

Experience True Audio Perfection

SolidDrive's extensive line of audio products makes it easy to create the ultimate audio system, regardless of installation requirements. SolidDrive builds these products with only the most select components and materials; and utilizes numerous unique and proven technologies.



INSTALLATION OF SOLIDDRIVE SD1 INTO WALLS AND CEILINGS WITH EXISTING DRYWALL

By utilizing these seven basic installation steps, you can install the SolidDrive SD1 into walls and ceilings with existing drywall to create sound for boardrooms, home theater, and distributed audio.

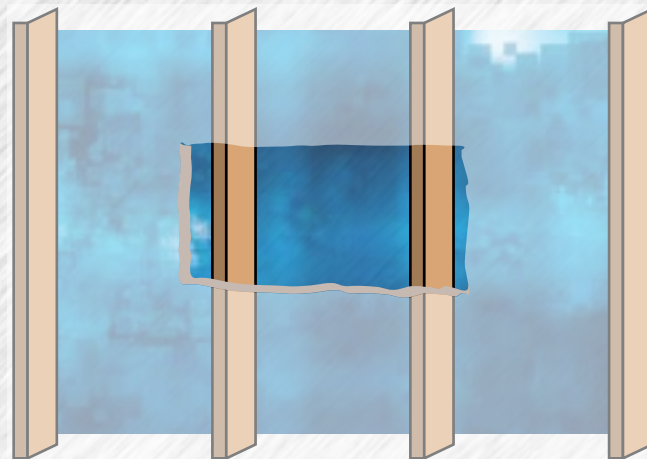


figure 1. Cut an opening large enough to install the mounting bracket.

GETTING STARTED WITH SOLIDDRIVE Included with the SolidDrive SD1 for installation into walls and ceilings before drywall:

One (1) SolidDrive SD1 unit and attached wiring harness with Eurostyle connector. *Additional mounting materials may need to be ordered with the SolidDrive SD1 or supplied by the installer depending on the application.

For drywall: For in-wall and in-ceiling installation, you will have ordered one (1) or more SolidDrive SD1s and one (1) or more patented acoustic in-wall brackets (one [1] bracket per SD1), which comes with four (4) #8-32 x 5/16" Phillips flat head machine screws for mounting the drive to the bracket. At the time of order, you will have specified 16 in., 24 in., or 12 in.

*Installation also requires four (4) 1 3/8" drywall screws and one (1) container of 3M® Super 77 Spray Adhesive (supplied by the installer).

STEP 1 Cut a rectangular opening in the wall.

For installing the SolidDrive SD1 mounting bracket into existing drywall, first cut a rectangular opening in the drywall. The minimum recommended opening size is approximately fifteen inches tall and beyond the width of the adjacent wall studs to help attach the mounting bracket and help in feathering the drywall back in and getting the drywall to meet at the seams (Figure 1). This will allow proper distribution of sound and the SolidDrive SD1 will function with optimum performance.

STEP 2 Attach the SolidDrive SD1 mounting bracket to wall studs or ceiling joists.

Place the mounting bracket between the wall studs or ceiling joists and secure with two, 1 3/8" drywall screws. Insert the screws through the 2 pre-drilled holes in each flange and screw them into the face of each wall stud or ceiling joist (Figure 2). The drywall screws need to be driven flush with the surface of the flange so that the drywall sets flush on the bracket flange.

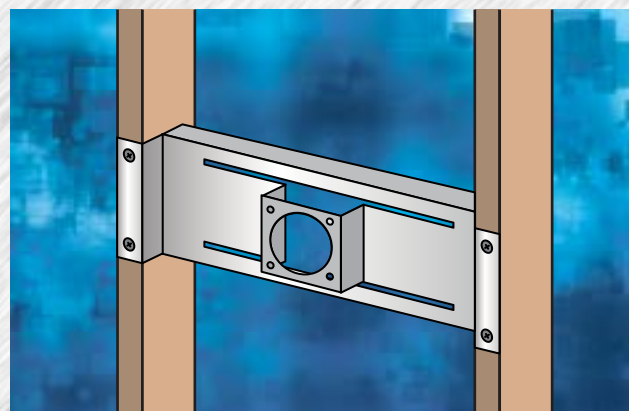


figure 2. Cut an opening large enough to install the mounting bracket.

STEP 3 Install the SolidDrive SD1 into the bracket.

Feed the SolidDrive SD1 cable through the round opening in the face of the mounting bracket. Insert the SolidDrive SD1

through the same opening with the oversized mounting base facing outward toward the side that the drywall will be installed and flush against the bracket face. Align the pre drilled holes in the mounting base to the threaded holes in the bracket face (Figure 3). Attach the SolidDrive SD1 securely to the mounting bracket using the 4 Phillips flat head machine screws.

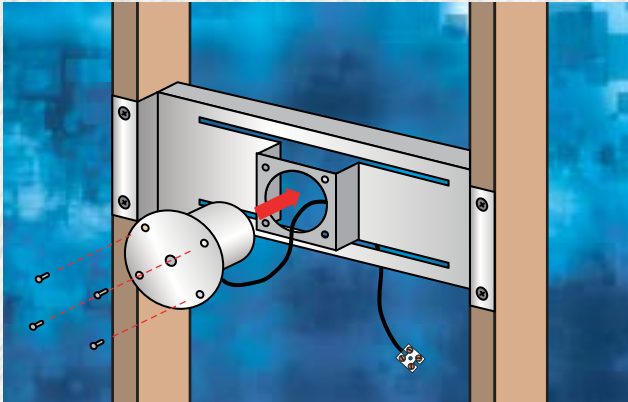


figure 3. SolidDrive SD1 mounting bracket attached to studs.

NOTE: The SolidDrive SD1 can also be installed without the mounting bracket in ceilings that are accessible from above. Use the 3M® Super 77 contact spray adhesive and liberally spray both the surface of the oversized mounting base and the drywall. Press the SolidDrive SD1 directly against the drywall. Make sure the surface is dry and free of dust.

STEP 4 Make the electrical connections.

Make the electrical connection between the SolidDrive SD1 and the speaker cable using the Eurostyle connector attached to the end of the SolidDrive SD1 audio cable. The polarity of the wiring is clearly indicated (Figure 4).

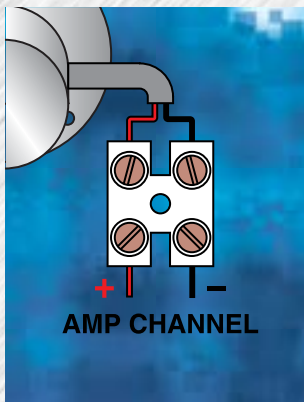


figure 4. Eurostyle connector

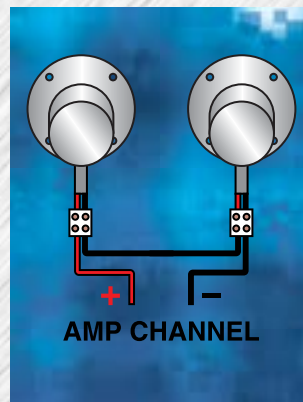


figure 5. SolidDrives wired in series

STEP 5 Apply adhesive to the dry-wall surface and the base of the SolidDrive SD1.

If possible, position the drywall panel so that the SolidDrive SD1 is at the center of the panel or as far from the edge of the panel as possible. This will allow proper distribution of sound and the SolidDrive SD1 will function with optimum performance. Prior to mounting, take measurements of the new drywall panel to determine the exact area that will come in contact with the base of the SolidDrive SD1 and spray that area liberally with the 3M® Super 77 contact spray adhesive. Also, liberally spray the surface of the oversized mounting base of the SolidDrive SD1 (masking around the base is highly recommended to prevent overspray). **IMPORTANT:** Failure to apply the adhesive to both the drywall surface and oversized mounting base will prevent the system from functioning properly.

STEP 6 Re-install the drywall cutout.

For re-installing the rectangle drywall panel that was cut out to install the SolidDrive SD1, it is important to create a uniform seal between the cut drywall and the existing drywall. This will allow proper distribution of sound and the SolidDrive SD1 will function with optimum performance. Apply fast setting joint compound, not vinyl based, between the cutout section and the existing drywall panel, making sure to fill the crack completely with mud then proceed with the normal mud and tape routine.

STEP 7 Equalize the SolidDrive SD1 sound system.

The surface material plays a key role in the system's sound performance. To ensure an optimal listening experience the installer **MUST** equalize the SolidDrive SD1 system. Equalization is accomplished by using the Equalization is accomplished by using SolidDrive SD-250 amplifier with EQ set to Dry Wall (this yields the highest quality sound), the optional SolidDrive Drywall Passive Equalization Module (not UL approved) or using the auto equalization feature available on some receivers.

HIGH OUTPUT INSTALLATIONS

For installations requiring high output, such as a home theater or other high output type applications, two SolidDrive SD1's should be used for each of the high output channels. For example the left, right, and center channel of a home theater or the left and right channels of a high output stereo system. The two SD1's should be wired in series for each of the high output channels about 4 to 6 inches apart (Figure 5). For maximum output each SolidDrive channel should have available at least 20 square feet of surface area.

SolidDrive™



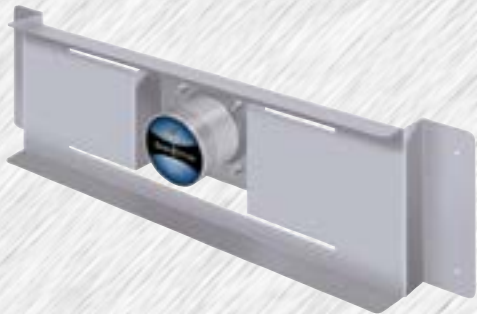
SolidDrive SD1 Specifications

Type	Full Range Transducer
Impedance	8 Ohm
Frequency Response	70 Hz to 15 kHz
Recommended Amplifier Power	10-100 Watts
Dimensions	2.28" Diameter x 2.08" Height Mounting Plate 3.5" Diameter
Weight	1.2 lb / .54 kg



SolidDrive SD-250 Specifications

Type	Class D Amplifier
Max Gain	34 dB (8 Ω)
Frequency Response	20 Hz - 20,000 kHz
Amplifier Power (Bridgable Stereo & Mono)	2 x 50 W / 8 Ω
Dimensions	3.98" (W) x 1.23" (H)
Weight	1.30 lb / .59 kg



SolidDrive SD1 In-Wall and In-Ceiling Mounting Bracket Specifications

Type	Patented Balanced Cantilever spring bracket
Construction	Heavy duty, galvanized steel
Dimensions	160C - 2.0" H x 17.5" W 240C - 2.0" H x 25.5" W 120C - 2.0" H x 13.5" W
Weight	1.0 lb / .45 kg



SOLIDDRIVE SD1 DRYWALL EQUALIZATION MODULE

The SolidDrive SD1 Drywall Equalization Module increases the system's sound performance for optimal listening enjoyment by using notch filters to correct peaks in the frequency response. Use one (1) module with each SolidDrive SD1.

SolidDrive SD1 Drywall Equalization Module Specifications

Connector Type	Eurostyle
Wire Size	16 gauge
Dimensions	1.0" H x 2.875" W x 2.0" D
Weight	.27 lb / .12kg

WARRANTY

The product is guaranteed for 7 years from date of purchase. Any misuses or modifications to this equipment will void the warranty.

WARNING

Read instructions prior to operating. To reduce the risk of fire or electric shock, do not expose this product to rain or moisture. Unplug prior to cleaning and clean with a damp cloth. There are no user-serviceable parts in this product, please refer all servicing to qualified personnel.

SolidDrive comes with a 7-year warranty

COMMERCIAL: 6430 North Business Park Loop | Park City, UT 84098 | TEL: 800.647.TUBE | FAX: 435.647.9666
RESIDENTIAL: 8005 W. 110th St., Suite 208 | Overland Park, KS 66210 | TEL: 855.663.5600 | 913.663.3200